

## Major Symptoms of Plugging

- reduced water quality
- reduced production
- increased drawdown
- microbial loading in water increases
- higher iron and manganese content



## Distribution Lines can:

- plug
- reduce flow
- corrode



## Plugging causes:

- higher energy costs
- scale build up in pipes
- lower efficiencies
- greater operating costs

Available in a Well Combo box consisting of:

- 3 **IRB-BARTs**
- 3 SRB-BARTs
- 3 **SLYM-BARTs**

Enough for three full tests



BART™ testers are patented products manufactured by:

Droycon Bioconcepts Inc.  
315 Dewdney Ave.  
Regina, Saskatchewan, Canada  
S4N 0E7

Phone: (306) 585-1762  
Fax: (306) 585-3000  
E-Mail: [sales@DBI.ca](mailto:sales@DBI.ca)  
WWW: <http://www.DBI.ca>  
U.S. Patent #4,906,566



# DBI

Droycon Bioconcepts Inc.

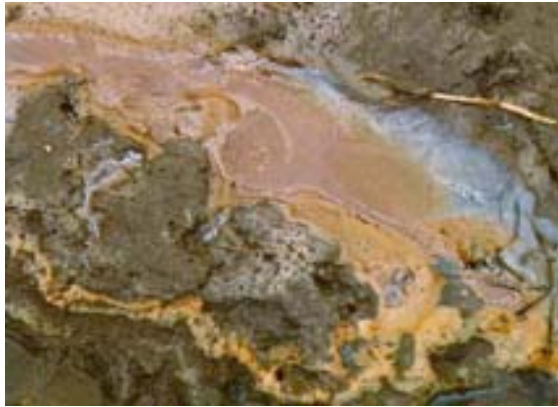
# BART™

Biological  
Activity  
Reaction  
Tests

A simple yet effective method for monitoring the population size and/or activity of specific groups of bacteria.



## Water Well Failure and Encrustations



## **Plugging** **Water Wells** **Microbial Fouling**

Common Experiences:

- lost production capacity
- extensive slime growth
- formation of plugs



The Well Combo BARTs determines the presence/absence of bacteria which can cause problems in various types of water wells and drains.



### **IRB**

Detects Iron Related Bacteria which causes plugging.



### **SRB**

Detects corrosion risk resulting from Sulfate Reducing Bacteria.



### **SLYM**

Detects Slime Forming Bacteria that create slimes, turbidity, and foul tastes and odors.

## **Common Signs of Water Well Microbial Problems**

- Colored or cloudy water
- Losses in production
- Falling water levels when pumping (greater draw downs)
- Erratic increases in iron
- Increased aggressivity of IRB, SRB, and/or SLYM bacteria
- Occurrence of taste and odor problems



- **EASY TO READ**
- **CAN DO THE TESTS IN THE FIELD**
- **GIVES BACTERIAL AGGRESSIVITY**